



PRE4CLE



2016 ANNUAL REPORT

DEAR FRIENDS AND STAKEHOLDERS,



During the past two years, many individuals have asked us to define kindergarten readiness and explain why it matters for success in school and life. For many, it's hard to make the connections between reading stories during circle time and imaginative play with friends and how that can translate to high school graduation, improved health outcomes, and secure jobs as adults.



Examined close up, however, in Cleveland's busy kindergarten classrooms, the connection could not be more apparent. Children who experience high-quality preschool are typically better able to participate successfully in the classroom in kindergarten and throughout their academic careers, have the foundational skills they need to grow academically, and are confident in their ability to interact with their teachers and classmates. As the Nobel Laureate James Heckman observed of school readiness, "Skill begets skill." In other words, what starts as a solid foundation in their first years creates a solid platform for success to come.



That's why Cleveland made access to high-quality preschool a core goal of *Cleveland's Plan for Transforming Schools*, our city's blueprint for comprehensive school reform. When PRE4CLE started in the fall of 2014, only 24 percent of Cleveland's children had the opportunity to attend a high-quality preschool. Today after just two full years of implementation, that number has grown by 50 percent. That result was made possible because families, preschool providers, and community partners came together in an unprecedented collaboration to support the early learning needs of Cleveland's young children.

A critical element of the Cleveland Plan is the goal of having high-quality schools in every neighborhood, including high-quality preschools. PRE4CLE set the goal of increasing access in two neighborhoods by 2016 and we are thrilled to report that PRE4CLE has exceeded that goal. Since the launch of PRE4CLE in 2013, 22 out of 34 neighborhoods in Cleveland have increased their high-quality preschool supply.

Families are essential to reaching the goals of PRE4CLE. In 2016, we launched a city-wide Enrollment Campaign, reaching more than 6,000 Cleveland families through direct engagement, innovative partnerships, and far-reaching communication about how to find and enroll in high-quality preschool. These efforts are only the beginning of our work to engage every Cleveland family with young children in the conversation about why early learning is a critical part of school and life success.

Connecting with partners and policymakers in Cleveland and across our state and nation is also vital to PRE4CLE's work. In 2016, PRE4CLE worked with Cuyahoga County and private philanthropic and business leaders to advocate and secure a \$22.8 million public-private investment in Universal Pre-K, Cuyahoga County's high-quality preschool model shown to produce great results for Cleveland's children. These and other success stories were highlighted through local and national forums this year about PRE4CLE's innovative collaboration, including *The Tavis Smiley Show* and *PBS News Hour*.

These are just a few of the highlights from a year full of activity and accomplishments on behalf of Cleveland's preschool children. Inside this report you will find comprehensive data on all ten elements of the PRE4CLE Plan, as well as our annual "State of Preschool" report. As the data show, while Cleveland has made great strides towards expanding high-quality preschool to all of Cleveland's children, there is still much work to be done. We invite your ideas, questions, and partnership as we continue to work to meet this ambitious goal.

Sincerely,

Eric Gordon
Co-Chair, Cleveland Early Childhood Compact
CEO, Cleveland Metropolitan School District

Marcia Egbert
Co-Chair, Cleveland Early Childhood Compact
Senior Program Officer for Human Services, The George Gund Foundation

Katie Kelly
Executive Director, PRE4CLE



When our smallest
students shine,
Cleveland thrives.

ABOUT PRE4CLE

PRE4CLE is Cleveland's plan to expand access to high-quality preschool for all 3- and 4-year-olds in Cleveland and to increase awareness and demand for high-quality preschool among Cleveland's families.

PRE4CLE was developed by a steering committee of more than 50 community leaders in 2014 to fulfill a core goal of *Cleveland's Plan for Transforming Schools*. The creation of PRE4CLE involved stakeholders from education, early childhood development, civic, philanthropy, business, religious, labor, and community organizations, as well as hundreds of parents and families.

PRE4CLE connects parents to high-quality public and private preschool programs, connects preschool providers to tools and resources to increase their quality and serve more children, and provides strategic leadership to accelerate the availability of high-quality preschool in Cleveland.

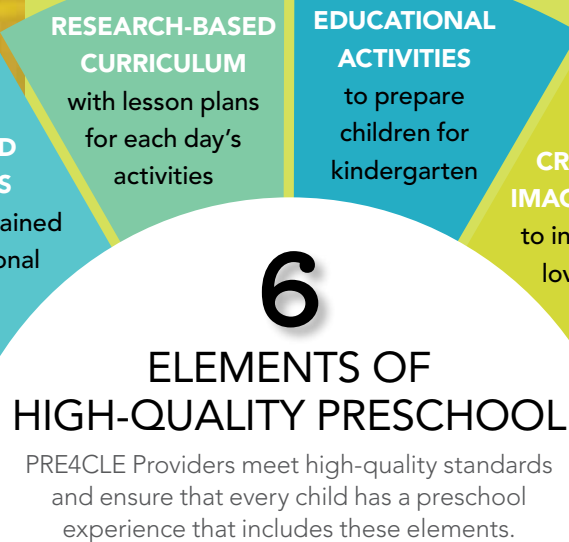
PRE4CLE is grounded in research, built from best practices, and created specifically to serve Cleveland's children. PRE4CLE officially began its work in March of 2014, guided by The Cleveland Early Childhood Compact, a public-private leadership body. This second annual report of PRE4CLE reflects accomplishments as of December, 2016.



PRE4CLE

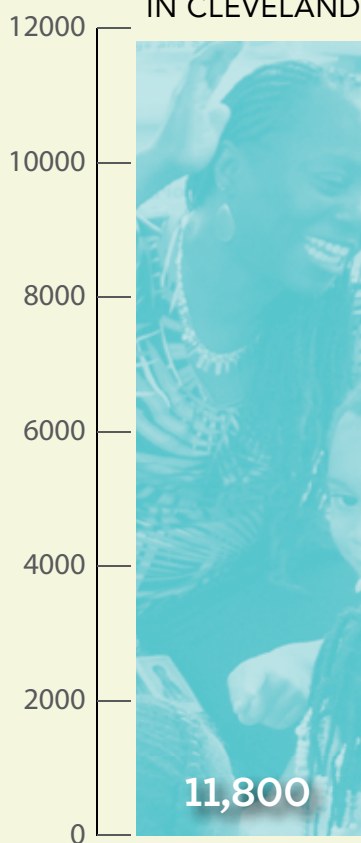
What Do We Mean by “High-Quality”?

PRE4CLE defines high-quality preschool programs as those that have a rating of 3 to 5 stars in Ohio’s Step Up To Quality rating system. Step Up To Quality recognizes and promotes early learning programs that meet research-based quality standards that lead to improved outcomes for children.

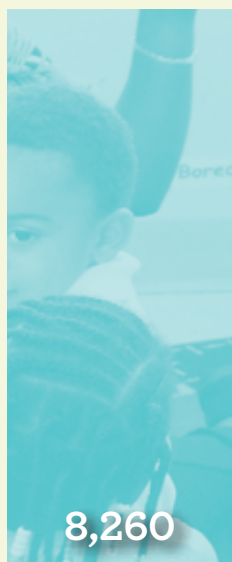


A Note About Our Data

All data from this report reflect progress as of December, 2016. Data were gathered from several sources, to whom we owe a debt of gratitude for providing their time and expertise. In particular, we thank **Case Western Reserve University**, through the **Jack, Joseph, & Morton Mandel School of Applied Social Sciences**, which worked with PRE4CLE to analyze the Bracken Assessment and Kindergarten Readiness Assessment data as well as data on high-quality preschool sites and child enrollment. We also thank our high-quality providers for willingly sharing their data with Starting Point.

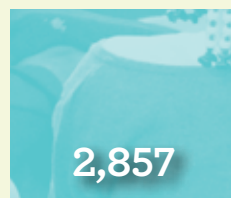


PROJECTED
PRESCHOOL
TAKE-UP RATE
(70%)



The 4,277 children currently enrolled in high-quality preschool represents a 50 percent increase since PRE4CLE's baseline year of 2013. High-quality preschools include all 3+ star-rated sites (which can be private centers, public preschool classrooms, or home-based child care). In the PRE4CLE Plan, all Cleveland Metropolitan School District (CMSD) sites were assumed to be high-quality based on program standards, and the enrollment in the 41 sites still pending rating are reflected in the chart. Of the 265 center-based preschool programs, 27 percent are highly-rated. In addition to these center-based sites, many children are being served by home-based child care providers. Though these 403 providers were only recently able to be rated, nearly a quarter have already been rated and six are highly-rated. There is still much work to be done to increase the availability of quality preschool across Cleveland, but significant progress has been made.

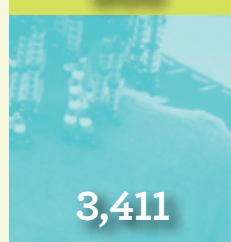
ENROLLMENT
IN
HIGH-QUALITY
SEATS IN 2013
(BASELINE)



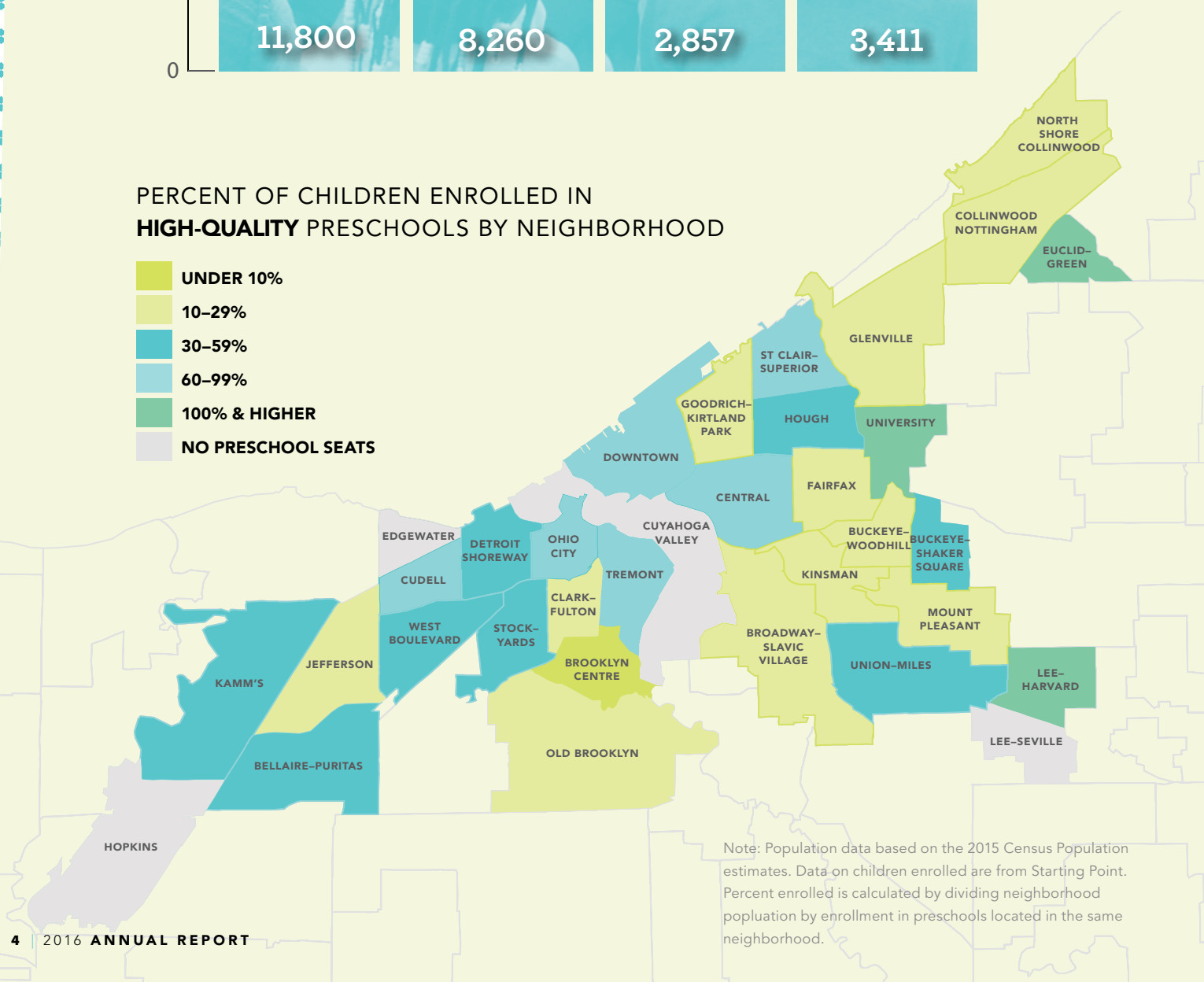
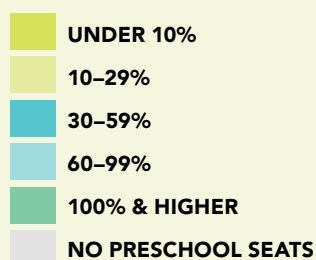
HIGH-QUALITY ENROLLMENT

866

CMSD seats pending high-quality rating



PERCENT OF CHILDREN ENROLLED IN HIGH-QUALITY PRESCHOOLS BY NEIGHBORHOOD



Note: Population data based on the 2015 Census Population estimates. Data on children enrolled are from Starting Point. Percent enrolled is calculated by dividing neighborhood population by enrollment in preschools located in the same neighborhood.

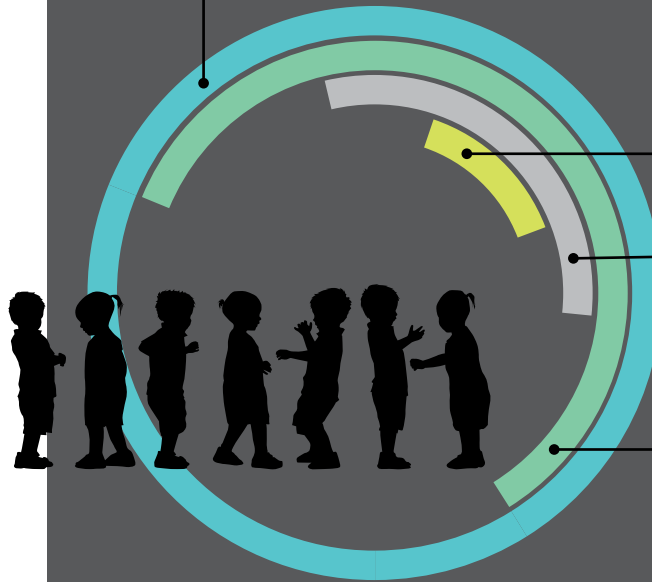
KIDS ENROLLED IN PRESCHOOL IN CLEVELAND



OF ALL
PRESCHOOL-AGED
CHILDREN IN
CLEVELAND ARE
ENROLLED IN
HIGH-QUALITY
PRESCHOOL

3- TO 5-YEAR-OLDS ENROLLED IN PRESCHOOL IN CLEVELAND

7,108



CHILDREN ENROLLED
IN **LOWER-QUALITY** PRESCHOOL

613

CHILDREN ENROLLED
IN **UNRATED** PRESCHOOL

2,218

CHILDREN ENROLLED
IN **HIGH-QUALITY** PRESCHOOL

4,277

TOTAL NUMBER OF CENTER-BASED
PRESCHOOL PROVIDERS IN CLEVELAND

265

HIGHLY-RATED CENTER-BASED PROGRAMS

27%

NUMBER OF
PROGRAMS RATED
HIGH-QUALITY

77



**HIGHLY-RATED
PRESCHOOL
PROVIDER TYPES**

CHILD CARE CENTER.....	32
HEAD START.....	18
FAMILY CHILD CARE HOMES....	6
PRIVATE PRESCHOOL.....	1
PUBLIC PRESCHOOL.....	20

10 Program Elements of the PRE4CLE Plan

- 1 **ENROLLMENT IN HIGH-QUALITY PRESCHOOL.** PRE4CLE will focus on helping families identify high-quality preschool opportunities and filling high-quality preschool seats.
 - As of December 2016, **4,277** children are enrolled in high-quality preschool, —a 50 percent increase in preschool enrollment since 2013.

- 2 **RAPID AND EFFICIENT EXPANSION AND ACCESS.** PRE4CLE will expand high-quality preschool slots and ensure that families have access to those slots.
 - Since PRE4CLE began in 2013, **997** new high-quality preschool seats have been created through public and private preschool expansion. Additionally, the Cleveland Metropolitan School District (CMSD) has created **480** new seats in CMSD schools.

- 3 **IMPROVING QUALITY.** PRE4CLE will work with Cleveland providers to help increase the number of providers that have a state Step Up To Quality (SUTQ) 3-star rating or better.
 - Since PRE4CLE began in 2013, **1,361** preschool seats have received high-quality ratings in addition to **928** seats in CMSD preschools that have been highly rated.

- 4 **PARTICIPATING PROVIDER REQUIREMENTS.** PRE4CLE will require stringent standards for preschool providers who wish to participate in PRE4CLE.
 - In its first year, PRE4CLE established quality standards for PRE4CLE partner preschool programs, called “PRE4CLE Providers,” that requires a 3- to 5-star rating in Ohio’s Step Up To Quality rating system plus additional standards for teacher education and smaller class sizes. As of 2016, **110** of Cleveland’s 118 high-quality preschool programs are PRE4CLE Providers.

{ **50%** INCREASE IN **PRESCHOOL ENROLLMENT** SINCE 2013. }

- 5 **SUPPORTING SUCCESSFUL TRANSITION.** PRE4CLE will engage partners that will coordinate with families, preschool teachers and kindergarten teachers to ensure a smooth transition to kindergarten.
 - CMSD completed a preschool to third grade transition plan in the 2014-2015 school year, and in 2016 hired a Transition Coordinator to work with CMSD teachers and staff to fully implement the transition plan.
- 6 **LEVERAGING COMMUNITY RESOURCES.** PRE4CLE will develop a Community Asset Road Map that support all domains of child development.
 - In 2016, Invest in Children developed CuyahogaKids.org, an online resource that will provide early learning information, resources, and event updates to Cuyahoga County families with young children, as well as connecting families to United Way’s 211 service. PRE4CLE is partnering with Cuyahoga County to promote CuyahogaKids.org to Cleveland families.



7 **COMMUNITY ENGAGEMENT.** PRE4CLE will develop and implement a comprehensive strategic communications plan to motivate and share messages with parents, providers and partners.

- PRE4CLE has **reached audiences in Cleveland and across the nation** through speaking engagements, traditional and social media, marketing, direct family engagement, and one-on-one outreach to policymakers and community leaders, **including 6,000 families** through its **Enrollment Campaign**.

{ PRE4CLE'S **ENROLLMENT CAMPAIGN** REACHED **6,000** FAMILIES. }

8 **EVALUATION.** PRE4CLE will establish clear benchmarks and measure its ongoing success.

- PRE4CLE worked with **Case Western Reserve University** to evaluate **child-level data** to track the **effectiveness of preschool programs** through the use of the Bracken assessment and, beginning this year, the Kindergarten Readiness Assessment. PRE4CLE's evaluation team also used **system-level data** to **examine the unique preschool needs of each Cleveland neighborhood**, which was used to help expand access to high-quality preschool.

9 **ADMINISTRATION.** PRE4CLE will be guided in a transparent, accountable way by the Cleveland Early Childhood Compact to ensure the PRE4CLE Plan is implemented with fidelity.

- The Cleveland Early Childhood Compact, along with the PRE4CLE staff leadership, **revised the PRE4CLE Plan** to incorporate new strategies and benchmarks for 2018 (see page 17 for more details). The Compact works together with the lead agencies for PRE4CLE, the Educational Service Center of Cuyahoga County and Starting Point, to guide the implementation of the PRE4CLE Plan.

10 **FINANCING.** PRE4CLE will work to secure public and private support needed to implement the Plan, maximizing use of existing sources and identifying new resources.

- PRE4CLE has raised **\$8.7 million** in public funds and **\$2.2 million** in private philanthropic **funding** to support the first three years of implementation. Additionally, PRE4CLE advocates for increased public funding support at the local, state, and federal levels. In 2015, local funding for high-quality preschool was increased through a \$22.8 million, 5-year public-private expansion of Cuyahoga County's Universal Pre-K program.

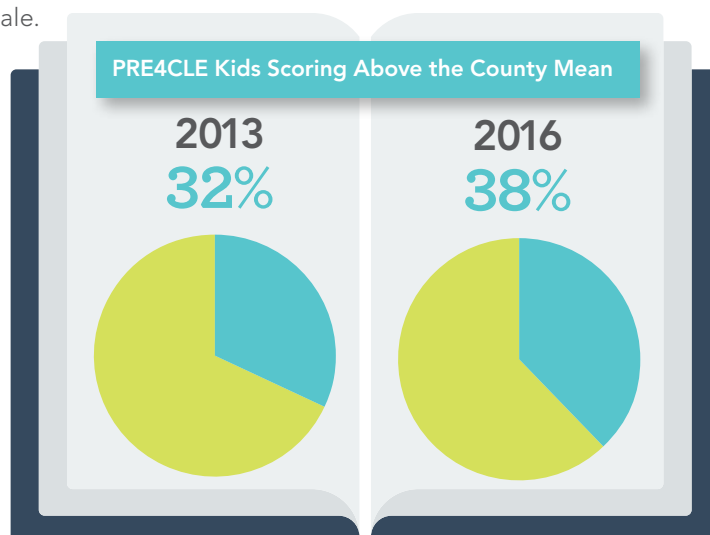
Benchmarks

PRE4CLE identified two child-level benchmarks and two system-level benchmarks to measure our success.

Child Level:

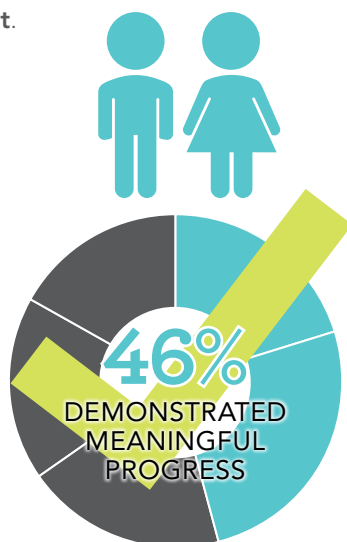
1. Ensure that two-thirds of children in PRE4CLE arrive at kindergarten scoring above the County mean on the state's kindergarten readiness measure by 2018.

Progress in 2015-16: For children who entered kindergarten in the fall of 2015, **36.1%** of PRE4CLE children scored above the overall county mean on the Kindergarten Readiness Assessment (KRA) and **38.2%** scored above the county mean on the Language & Literacy subscale.



2. By 2016, show statistically significant development gains by children in PRE4CLE as a group in the year before kindergarten, with at least half of participating children showing "meaningful" improvement.

Progress in 2015-2016: **46.2%** of children demonstrated meaningful improvement (defined as significant improvement on at least three of the five subscales) on the Bracken School Readiness Assessment.

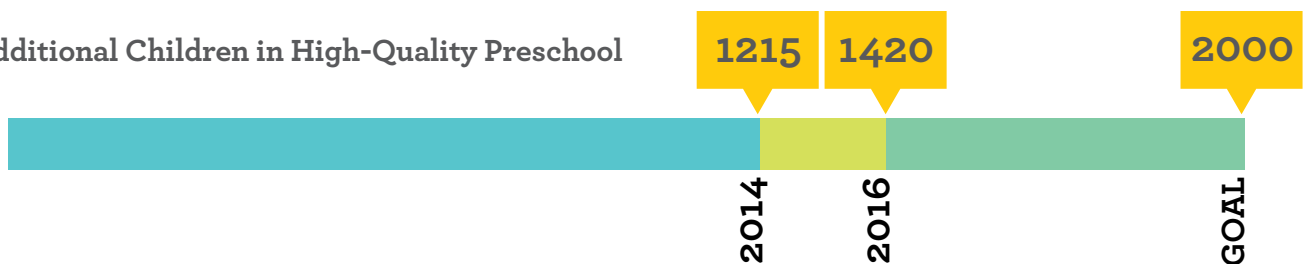


System Level:

1. 2,000 additional children enrolled in high-quality preschool by 2016.

Progress in 2015-2016: **4,277** children are enrolled in high-quality preschool. This is 1,420 additional children that are enrolled in high-quality preschool since PRE4CLE began, or about 71 percent of our initial 2-year goal of enrolling 2,000 additional children in high-quality preschool.

Additional Children in High-Quality Preschool



2. Target newly-rated and newly-created high-quality seats in underserved neighborhoods, as well as throughout the city by 2016.

Progress in 2015-2016: **22** of **33** neighborhoods in Cleveland have increased the availability of high-quality seats since 2014 and 16 neighborhoods now have enough high-quality seats to serve at least 50 percent of the children who live in the neighborhood, up from just 11 neighborhoods when PRE4CLE began.



Child and Family Results

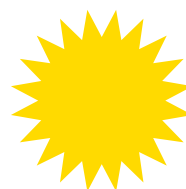
“My son Anderson’s experience in James A. Garfield School’s integrated preschool classroom was integral to his early success in preschool and his continued achievements in kindergarten. Not only was he taught rigorous educational concepts by incredibly qualified, compassionate, and experienced educators, but he was also formally exposed to age-appropriate social skills instruction. I credit this program for my child’s ability to not only function, but fully participate in and enjoy his current kindergarten experience.”

- Ely Whitaker, Parent, James A. Garfield School



PRE4CLE identified access to full-day preschool opportunities as a core goal to support the needs of working families, as well as provide increased exposure to high-quality early learning for Cleveland’s children. In 2015-2016, 745 additional full-day seats were created to better serve the needs of Cleveland’s children and families.

**NEW FULL DAY SEATS
SINCE JUNE 2015:**



+745

FULL DAY SEATS

Child Outcomes

PRE4CLE worked with Case Western Reserve University to evaluate child outcomes using the Bracken School Readiness Assessment and the Kindergarten Readiness Assessment. The Bracken assessment is given at the beginning and end of a child's preschool experience while the Kindergarten Readiness Assessment is administered when a child enters kindergarten.

Bracken Results

The Bracken School Readiness Assessment is administered by independent consultants in PRE4CLE sites in the fall (pre-test) and spring (post-test). The Bracken includes five subscales that assess basic concepts related to school readiness: colors, letters, numbers/counting, size/comparison, and shapes.

- On average, children showed gains on all five Bracken subscales from pre-test to post-test.
- **46.2%** of children demonstrated meaningful improvement (defined as significant improvement on at least three of the five subscales) on the Bracken School Readiness Assessment.¹

Kindergarten Readiness Assessment Results

The Kindergarten Readiness Assessment (KRA) is administered by a child's teacher in the fall of their kindergarten year. The assessment is administered in three ways: selecting an answer to a question the teacher asks, performing a requested task, or being observed by the teacher during school and at recess.

The KRA assesses four areas of a student's development and learning through a variety of tasks, such as:

- 1. LANGUAGE AND LITERACY:** making predictions and answering questions about a text, identifying rhyming words or letter sounds, and writing simple words, including their name.
- 2. MATHEMATICS:** identifying numbers, counting, sorting, and identifying or comparing sizes.
- 3. SOCIAL SKILLS:** cooperating and conversing with peers, following directions, sharing, taking turns, and expressing feelings and ideas.
- 4. PHYSICAL DEVELOPMENT AND WELL-BEING:** demonstrating fine and gross motor skills with control, coordination, and balance.

Each child receives a score for each area as well as an overall score. The overall score is the total of the scores in each of the four areas and is divided into three bands of performance: Demonstrating Readiness, Approaching Readiness, and Emerging Readiness. The Language and Literacy assessment also divides its score into two levels: on-track and not on-track.

36.1% of PRE4CLE children² who entered kindergarten in the fall of 2015³ scored above the overall county mean on the Kindergarten Readiness Assessment (KRA). **38.2%** of PRE4CLE children scored above the county mean on the Language & Literacy subscale.

¹ This figure represents a weighted average based on data available from 431 children with both pre- and post-BSRA-3 assessments attending PRE4CLE settings in 2014-2015 and/or 2015-2016.

² In this analysis, we focused on children who attended PRE4CLE sites in the City of Cleveland in 2014-2015 and attended CMSD for kindergarten beginning in the fall of 2015, N=817. The total sample of children in CMSD kindergarten classrooms who took the KRA in the fall of 2015 is N=2460.

³ These children were in PRE4CLE classrooms during the 2014-2015 school year and were given the KRA upon their entry to kindergarten in the fall of 2015.



46%

OF PRE4CLE CHILDREN
DEMONSTRATED
MEANINGFUL CHANGE
ON AT LEAST 3 OF 5
BRACKEN SUBSCALES



38%

OF PRE4CLE CHILDREN
SCORED ABOVE THE
COUNTY MEAN ON THE
**LANGUAGE &
LITERACY KRA**

Preschool Provider Results

NEW
HIGH-QUALITY
PRESCHOOL
SEATS SINCE 2013



Newly-Created

997

Raised to Quality

1,361


2,358



ADDITIONAL
HIGH-QUALITY SITES
SINCE 2013

CHILD CARE CENTER 16

HEAD START 13

FAMILY CHILD CARE HOMES 6

PRIVATE PRESCHOOL 1

PUBLIC PRESCHOOL 3

TOTAL NEW SITES **40**

Cleveland Metropolitan
School District
Highlights

640

HIGHLY-RATED PRESCHOOL SEATS

20

HIGHLY-RATED PRESCHOOL SITES

480

NEW SEATS SINCE 2013

Preschool Seat Expansion

One of PRE4CLE's primary goals is to expand the number of high-quality preschool seats available in Cleveland by creating new seats and raising existing seats to quality. PRE4CLE, in partnership with Starting Point and Cuyahoga County Invest in Children, has used two primary strategies to accomplish this goal.

CLASSROOM START-UP GRANTS

Over the past two years, PRE4CLE has awarded Classroom Start-Up Grants to existing high-quality preschool providers that had space to add classrooms. The funds were used for renovations, equipment purchases, and staff compensation.

	2015-16	2016-17	TOTAL
Classrooms	4	5	9
Children Served	80	160	240
Award Amount	\$120,000	\$150,000	\$270,000

ACCELERATED QUALITY-IMPROVEMENT MODEL

In the fall of 2016, five preschool providers opted to participate in PRE4CLE's Accelerated Quality Improvement Model for Step Up To Quality. Funded through Cuyahoga County Invest in Children and led by Starting Point, this model gave these five programs the opportunity to receive high-quality ratings from the State of Ohio by participating in professional development and evaluation and receiving technical assistance and materials.

LOSS OF PRESCHOOL SEATS

As a result of Head Start policy changes at the federal level, many of Cleveland's half-day Head Start seats were converted to full-day preschool seats in 2015 and 2016. Additionally, some Head Start preschool seats were converted to Early Head Start opportunities, which provide high-quality early learning and development support to children age birth-to-three.

While these 335 conversions contributed to a reduction of nearly 600 high-quality preschool seats and PRE4CLE falling short of meeting its initial goal of 2,000 additional children enrolled in high-quality preschool by 2016, their overall impact is very positive for Cleveland's early learning system. First, these conversions contributed to the

creation of 745 additional full-day preschool seats, helping PRE4CLE meet a core goal of the Plan to increase access to full-day preschool opportunities to provide greater early learning access for preschool children and better support for working families. Second, increased Early Head Start opportunities strengthen Cleveland's early learning pipeline during the critical first three years of life.

In addition to conversions, seven high-quality preschools in Cleveland closed due to facilities challenges, resulting in a loss of more than 250 high-quality preschool seats. Those seats are currently being relocated to facilities that can better serve Cleveland's preschool children.

“Since our partnership with PRE4CLE began we have seen tremendous growth and support of our program. PRE4CLE offers invaluable information regarding programming, community outreach, marketing, and funding sources. We received a start-up grant that has allowed us to almost triple our enrollment, which means we are able to provide more children with the opportunity to attend quality preschool.”

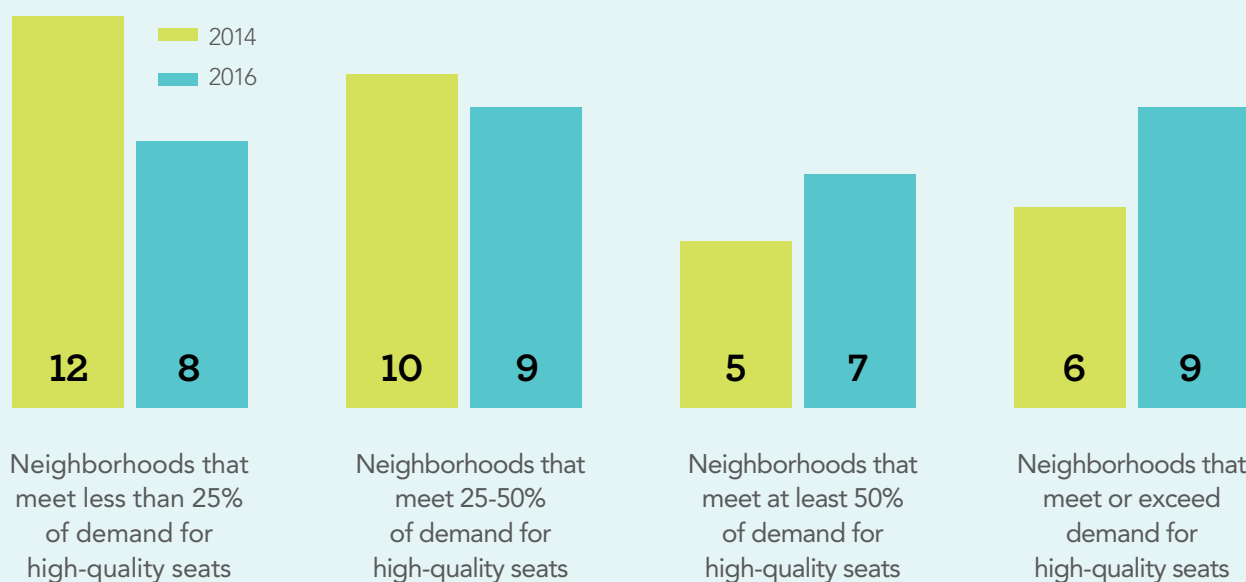
- Lucy Conant, Director of Education,
The Salvation Army Ohio City

93%
OF HIGH-QUALITY
PRESCHOOLS IN
CLEVELAND ARE
PRE4CLE PROVIDERS

Community Results

Preschool Access by Neighborhood

PRE4CLE is charged with targeting newly-rated and newly-created high-quality seats in underserved neighborhoods, as well as throughout the city to ensure that preschool access is equitable across Cleveland. PRE4CLE works with its many partners and PRE4CLE Providers to make decisions about opening new preschools and preschool classrooms in Cleveland neighborhoods with the highest need. Since PRE4CLE began, 22 of 33 neighborhoods in Cleveland have increased the availability of high-quality seats and 16 neighborhoods now have enough high-quality seats to serve at least 50 percent of the children who live in the neighborhood, up from just 11 neighborhoods when PRE4CLE began.



Not Considered due to low number of children: Cuyahoga Valley



“The impact of PRE4CLE’s work has been profound, and reflects the unprecedented public-private partnerships that are so critical to our continued success in expanding access to high-quality preschool for our city’s children.”

- Kristen Baird Adams, Chief Operating Officer,
Office of the Regional Presidents, PNC Bank

Enrollment Campaign

PRE4CLE is working to ensure that families are aware of their early learning options and have the tools they need to enroll their children in high-quality preschools. PRE4CLE provides families with information on why preschool matters, how to identify high-quality preschool, and how to find the right preschool for their child. PRE4CLE's Enrollment Campaign includes outreach to families through direct engagement, a broad-based communication campaign, and partnerships with more than 40 community agencies.

835

PARENT
INFORMATION
CARDS
COMPLETED

24

OPEN HOUSES
HOSTED
RESULTING IN
ABOUT 500
ENROLLMENTS

65

COMMUNITY EVENTS
ATTENDED RESULTING
IN CONTACT WITH
OVER 1,000 FAMILIES
AND NEARLY 200
PRESCHOOL
REFERRALS

8,500

PARENT
INFORMATION
CARDS
DISTRIBUTED

2 MIL+

IMPRESSIONS
THROUGH RADIO,
DIGITAL ADS, DIRECT
MAIL, ROBOCALLS, AND
SOCIAL MEDIA

Connecting Parents to Preschool

PRE4CLE has reached thousands of families through its marketing campaign, which focuses on enrolling children in high-quality preschool.

- ✓ **SEARCH TOOL** used about **800** times
- ✓ **3,289** CALLS TO STARTING POINT
- ✓ **INCREASED AWARENESS AND TRUST OF PRE4CLE**



PRE4CLE was featured on two national news programs, *The Tavis Smiley Show* and *PBS News Hour*, as well as several local television and radio programs and seven national and local forums.

Community Results *continued*

Advocacy

PRE4CLE led the Early Childhood Compact and other Cleveland partners to successfully advocate for increased resources and improved policies for Cleveland's preschool children. In 2016, PRE4CLE worked closely with Cuyahoga County Executive Armond Budish and Cuyahoga County Council leaders to increase funding for the County's Universal Pre-K (UPK) program by \$10 million. These public dollars were also matched by a \$12.8 million private commitment from business and philanthropic leaders in Cuyahoga County. The expansion will double the number of UPK seats to approximately 4,000—about half of which will be in Cleveland—over five years, provide tuition assistance to many Cleveland families, and quality improvement support to Cleveland preschool programs.

Partnerships

PRE4CLE's work is made possible through a diverse set of public and private partners working together to expand high-quality preschool in Cleveland. PRE4CLE is led by the Cleveland Early Childhood Compact, a public-private leadership body and PRE4CLE partnered with 110 high-quality preschool programs to increase program quality, increase enrollment, and expand the number of high-quality seats. PRE4CLE also partners with more than forty community partners to meet the goals of the PRE4CLE Plan in various ways, including: reaching out to families as part of PRE4CLE's enrollment campaign, increasing opportunities for preschool teacher education, advocating for increased resources for preschool programs, leveraging community resources for preschool children, and evaluating our results.

Financing

In 2016, PRE4CLE raised an additional \$1.4 million to support PRE4CLE's direct operation. Public funding was committed through CMSD and Cuyahoga County. Private funding was granted through The Cleveland Foundation, The George Gund Foundation, and The PNC Foundation. In 2016, several new private funders committed to PRE4CLE: The Abington Foundation, The Bruening Foundation, The Char and Chuck Fowler Family Foundation, and The Thomas White Foundation.

The PRE4CLE Plan

Delivering on the Promise of the Cleveland Plan

The Cleveland Plan calls for expanding preschool to all 3- and 4-year-old children in Cleveland and PRE4CLE provides the roadmap on how to meet that goal. Since PRE4CLE developed its original Plan in 2013, there have been both policy and funding shifts in the early childhood landscape in Cleveland and at the state and national levels. Along with these external factors, several of the initial benchmarks set for PRE4CLE expired at the end of 2016. PRE4CLE, under the guidance of the Early Childhood Compact, has thoroughly reviewed the original PRE4CLE Plan and refreshed its strategies, goals, and benchmarks based on these dynamics and the work done over the past three years.

PRE4CLE 2018 Benchmarks

To measure its success over the next two years, PRE4CLE will use the following benchmarks:

SYSTEM-LEVEL BENCHMARKS

1. Enroll 40% of preschool-aged children in high-quality preschool by June of 2018, 45% by June of 2019, and 50% by June of 2020.
2. Increase the number of Step Up To Quality highly-rated preschool programs by 30% between July 1, 2016 and June 30, 2018.

CHILD-LEVEL BENCHMARKS

1. 50% of children who attended a PRE4CLE preschool are On Track on the language and literacy subscale of the Ohio Kindergarten Readiness Assessment in the fall of 2018 (from the baseline of 44.7%).
2. 65% of children who attended a PRE4CLE preschool are in the Demonstrating or Approaching school readiness bands of performance on the Ohio Kindergarten Readiness Assessment, with at least 25% in the Demonstrating school readiness band in the fall of 2018 (from the baseline of 60.2%).

THE MAJOR CHANGES IN THE REVISED PLAN INCLUDE:

1. Calls for a dedicated revenue stream to fulfill the PRE4CLE goals.
2. Clarifies PRE4CLE's support for partnering with Cuyahoga County to expand Universal Pre-K to all of Cleveland's children as one of PRE4CLE's core strategies to improve preschool quality and increase affordability for families.
3. Streamlines goals to better define partnerships with other community efforts.

To see the full plan, visit
PRE4CLE.org/resource/2016Plan



PRE4CLE Providers

Bellaire-Puritas

Artemus Ward
Bellaire Head Start
Puritas Head Start
Robinson G. Jones

Broadway-Slavic Village

Mound
Villa Head Start
Warner Girls' Leadership Academy
Willow

Brooklyn Centre

Corrina Bryant
Denison
Maribel Guerra

Buckeye-Shaker Square

Buckeye Head Start
Debra Ann November Early Learning Center
Fundamentals Early Childhood Development Academy
Sunbeam

Buckeye-Woodhill

East End Individual Learning Center
Harvey Rice

Central

Bingham Early Learning Center
Catholic Charities at the Quandran
Dike School of the Arts
The Early Childhood Center at Arbor Park
Family Life Child Care of Cleveland
George Washinton Carver
King Kennedy Head Start
Marion Sterling
Outhwaite Head Start
William Patrick Day Head Start
YWCA of Greater Cleveland

Clark-Fulton

Market Square Horizon Education Center
Walton

Collinwood-Nottingham

East Clark
Hanna Gibbons
Intergenerational Day Care
Kenneth W. Clement Boys' Leadership Academy

Cudell

Marion Seltzer
Willard Child Development Center

Detroit-Shoreway

Gordon Square Early Learning Center
Joseph Gallagher
St. Augustine Manor Child Enrichment Center
Waverly

Downtown

Cleveland Fed Kids

Euclid-Green

Carl B. Stokes Head Start
Euclid Park

Fairfax

Bolton

Glenville

Franklin D. Roosevelt
Glenville Early Learning Center
Iowa-Maple
Mary M. Bethune
Murtis Taylor at Kathryn R. Tyler Center
Patrick Henry
Prescious Beginnings
Wade Early Learning Center

Goodrich- Kirtland Park

Case

Hough

Daniel E. Morgan
Lexington Bell Early Childhood Center
Mary B. Martin
Wade Park



Jefferson

Garfield
McKinley
Wilson's Home Daycare

Kamm's

Clara E. Westropp
Douglas MacArthur
Newton D. Baker
Riverside
Riverside Head Start
Valley View Boys' Leadership Academy
West Park Discovery World

Kinsman

Anton Grdina
Rainbow Terrace Head Start

Lee-Harvard

Adlai Stevenson
Charles W. Eliot
Louis Stokes Head Start

Mount Pleasant

Andrew J. Rickoff
Brightside Academy
Murtis Taylor Child Enrichment Program
Sister J's Child Enrichment Program

North Shore Collinwood

A Jubilee Academy
Memorial
Oliver Perry

Ohio City

Lakeview Terrace Head Start
Orchard Hale STEM
Paul Dunbar

Old Brooklyn

Benjamin Franklin
Charles Mooney
Old Brooklyn Horizon Education Center
Weekare Day Care
William Cullen Bryant

St. Clair-Superior

St. Phillip Neri Head Start
St. Thomas Aquinas Head Start
Willson

Stockyard

Clark
Salvation Army Ohio City
Thomas Jefferson

Tremont

Buhrer
Horizon Child Development Center
Luis Munoz Marin
Merrick House
Scranton
Tremont Montessori

Union-Miles

Chapelside Academy
Charles Dickens
Miles
Miles Park
Nathan Hale
Robert Jameison
Union Miles Head Start

University

Cleveland Music Settlement

West Boulevard

Almira
Louis Agassiz
St. Ignatius Head Start
Wilbur Wright



PRE4CLE FUNDERS

PRE4CLE is grateful for the generous support of our funders.

The Cleveland Foundation

The Cleveland Metropolitan School District

Cuyahoga County

The George Gund Foundation

PNC Foundation

The Abington Foundation

The Bruening Foundation

The Char and Chuck Fowler Family Foundation

The Thomas White Foundation

PRE4CLE STAFF

Katie Kelly, Executive Director

Michelle Bledsoe, Coordinator

Michelle Connavino, Operations and Outreach Specialist

Akanni Thomas, Outreach and Engagement Specialist

Britton Hill, Outreach and Engagement Specialist

Billie Osborne-Fears, Executive Director, Starting Point

PRE4CLE would like to acknowledge the Educational Service Center of Cuyahoga County and Starting Point for their significant leadership as PRE4CLE lead agencies, as well as in-kind support for PRE4CLE operations and programs.



CLEVELAND EARLY CHILDHOOD COMPACT MEMBERS

Executive Committee

Eric Gordon, CEO, Cleveland Metropolitan School District (Co-Chair)

Marcia Egbert, Senior Program Officer, The George Gund Foundation (Co-Chair)

Rebekah Dorman, Director, Cuyahoga County Office of Early Childhood

Monyka Price, Chief of Education, City of Cleveland Office of Mayor Frank Jackson

Mark Sniderman, Executive in Residence, Case Western Reserve University

David Quolke

President of the Cleveland Teacher's Union (CTU)

Michelle Rzucidlo-Rupright

Teacher and CTU Secretary, CMSD

Linda Schlein

Greater Cleveland Congregations

David Smith

Preschool Provider Representative, Executive Director, Horizon Education Centers

Felton Thomas

Director, Cleveland Public Library

Qianna Tidmore

Office of Early Childhood Education, CMSD

Piet van Lier

Executive Director, Cleveland Transformation Alliance

Nicole Vitale

Office of Early Childhood, CMSD

Susan Wagner

Content Expert, CMSD

Linda Williams

Senior Director of Educational Services, ideastream

Dr. Thea Wilson

Vice President of Children and Families, CEOGC

Marianne Wolf

Special Education Preschool, CMSD

Khalilah Worley

Organizer, Greater Cleveland Congregations

Sajit Zachariah

Ph.D., Dean, College of Education, Cleveland State University

Members

Kristen Baird Adams

Chief Operating Officer, Office of the Regional Presidents, PNC Bank

Elizabeth Anthony

Senior Research Associate, Case Western Reserve University

Ann Bowdish

Greater Cleveland Congregations

Evelyn Burnett

Vice President of Economic Opportunity, Cleveland Neighborhood Progress

Laura Chalker

Vice President of Education and Grantee Services, The Centers for Families and Children

Jacklyn A. Chisholm

Ph.D., President and CEO, Council for Economic Opportunities in Greater Cleveland (CEOGC)

Jennifer Dodd

Director of Operations and Development, Education Service Center of Cuyahoga County

Cindy Fareed

Quality Enhancement Director, Starting Point

Rob Fischer

Co-Director, Center on Urban Poverty and Community Development, Case Western

Debbie Fodge

Assistant Director, Starting Point

Magda Gomez

Cleveland Hispanic Roundtable

Maribel Guerra

Preschool Provider Representative, Develop & Enhance the Mind Enrichment Center

Denise Hallman

Early Childhood Education Coordinator, ideastream

Kathleen Hallissey

Director of Community-Responsive Grantmaking, The Cleveland Foundation

Katie Kelly

Director, PRE4CLE

Bob Mengerink

Superintendent, Educational Service Center of Cuyahoga County

Karen Mintzer

Director, Help Me Grow

Ann Mullin

Senior Program Officer, The George Gund Foundation

Elizabeth Newman

CEO, The Centers for Families and Children

Billie Osborne Fears

Executive Director, Starting Point

Michelle Pierre-Farid

Chief Academic Officer, Cleveland Metropolitan School District (CMSD)

PARTNER ORGANIZATIONS

The work of PRE4CLE is supported by many organizations in the Cleveland community that are not represented on the Cleveland Early Childhood Compact. Without these additional partners, we would not be able to meet our goals. We are extremely grateful to these organizations and the Cleveland community for championing high-quality early childhood education.



PRE4CLE

6393 Oak Tree Blvd., Independence, OH 44131
216.524.3000 | PRE4CLE.org