



PRE4CLE

---

2014-2015 ANNUAL REPORT









# LETTERS FROM OUR LEADERSHIP

## DEAR CLEVELAND COMMUNITY,

*Research shows us time and time again that few things impact a child's success in life as much as his or her early experiences.*

The first five years of life, culminating in entry into kindergarten, set the stage for all of the learning and achievement that follow. High-quality preschool experiences are key to preparing children for a lifetime of learning and success, and they are one of the smartest investments we can make.

In 2014, we had the honor to lead the city-wide preschool planning process that became PRE4CLE. At the time, we had high hopes and big visions, but we could not have imagined the level of enthusiasm, buy-in and partnership that has emerged to make PRE4CLE a reality.

We made some big strides in our first year, due entirely to the providers and partners who have taken up the banner of high-quality preschool with enthusiasm and expertise, and the families who joined with PRE4CLE to provide a strong start for their children. In one short year, PRE4CLE became a vital element in the evolving success of the Cleveland Plan, our community's blueprint for comprehensive school reform.

On behalf of the entire Cleveland Early Childhood Compact, we encourage you to review this report thoroughly. Then, share

your input, ideas and questions with us as we continue the PRE4CLE implementation work. Together, we can further enhance and expand preschool experiences for all of Cleveland's young children.

### Eric Gordon

CEO  
Cleveland Metropolitan  
School District

Co-Chair  
Cleveland Early  
Childhood Compact

### Marcia Egbert

Senior Program Officer  
The George Gund  
Foundation

Co-Chair  
Cleveland Early  
Childhood Compact

## DEAR PRESCHOOL SUPPORTERS & ADVOCATES,

*The first year of PRE4CLE was full of activity, and we have many great accomplishments to show for it.*

With the buy-in and investments you've provided to PRE4CLE, we made great strides in increasing the number of high-quality preschool seats available to Cleveland's children. In fact, we're more than halfway to our overall goal of creating and filling 2,000 new seats in our first two years.

In addition, many preschool programs improved the level of quality they are providing to Cleveland's children. Fifteen programs received 3- to 5-star ratings from the state's quality rating system, Step Up To Quality, equaling 752 more young children

in Cleveland with access to preschool programs with a research-based curriculum, age-appropriate lesson plans, and a variety of fun and educational activities to help children get ready for kindergarten. Nearly half of those programs are in Cleveland Metropolitan School District elementary schools.

Does high-quality preschool really make a difference? Absolutely! In fact, 80% of the children in PRE4CLE high-quality programs scored in the top three levels of a nationally recognized kindergarten assessment. This means they are very likely to enter

kindergarten ready to succeed, meet third grade reading benchmarks, increase their chances of graduating from high school and college, and earn more during their lifetimes.

PRE4CLE facilitated a successful public-private partnership with committed partners, providers, and families working together to expand access to high-quality preschool for Cleveland's children. The Cleveland community fully embraced the idea of working together to support our youngest students, and it shows. From the national praise we received, to the hope and enthusiasm I've heard in individual conversations with so many of you, the importance of our work and the strides we've made to date are abundantly clear.

Although we focus on 3- and 4-year-olds, PRE4CLE is for all of Cleveland, and together we are creating a future for our city that is more promising for everyone.

### Katie Kelly

Executive Director  
PRE4CLE



*When our smallest students shine, Cleveland thrives.  
Our vision is that every child in our community starts  
kindergarten ready to succeed.*

# OUR OVERVIEW

## A HIGH-QUALITY PLAN

PRE4CLE is Cleveland's plan to offer a high-quality preschool experience to all 3- and 4-year-olds and to increase awareness and demand for high-quality preschool among families in Cleveland.

Began its work in March of  
**2014**

It was developed by a steering committee of more than 50 community leaders in 2014 to fulfill a core goal of The Cleveland Plan for Transforming Schools. The creation of PRE4CLE involved stakeholders from education, early childhood development, civic, philanthropy, business, religious and labor organizations in our community, as well as hundreds of parents and families.

PRE4CLE connects parents to high-quality public and private preschool programs, connects preschool providers to tools and resources to increase their quality and serve more children, and provides strategic leadership to accelerate the availability of high-quality preschool in Cleveland.

PRE4CLE is grounded in research, built from best practices, and created specifically to serve Cleveland's children. The plan addresses ten core components necessary to provide a systemic, sustained approach to high-quality preschool: administration, finance, enrollment, expansion and access, quality standards, provider training, kindergarten transitions, community resources, communication, and evaluation.

PRE4CLE officially began its work in March of 2014, guided by The Cleveland Early Childhood Compact, a public-private leadership body. This first annual report of PRE4CLE reflects accomplishments between March 2014 and June 2015.

## WHAT DO WE MEAN BY "HIGH-QUALITY?"

PRE4CLE defines high-quality preschool programs as those that have a rating of 3 to 5 stars on Ohio's Step Up to Quality rating system, which recognizes and promotes early learning programs that meet quality standards based on national research identifying improved outcomes for children.

### A Note About Our Data

All data from this report reflect progress as of June 2015. They were gathered from several sources, to all of whom we owe a debt of gratitude for providing their time and expertise in their collection. In particular, we thank Case Western Reserve University, through the Jack, Joseph, & Morton Mandel School of Applied Social Sciences, which worked with PRE4CLE to analyze the Bracken Assessment scores as well as data on high-quality preschool sites and child enrollment. We also thank our high-quality providers for willingly sharing their data with Starting Point.

Our providers are characterized by:

1

### ENVIRONMENTS

that are fun, welcoming, safe and caring

2

### STAFF AND TEACHERS

who are well-trained and professional

3

### CURRICULUM

that is based in research

4

### EDUCATIONAL ACTIVITIES

to prepare each child for kindergarten

5

### CREATIVE & IMAGINATIVE PLAY

to inspire a lifelong love of learning

6

### FEEDBACK

about children's learning and progress

OUR HIGHLIGHTS

High-Quality Preschool Expansion

PRE4CLE IS ON TARGET

The number of high-quality preschool seats expanded by 1,232 in the 2014-2015 school year, helping reach more than 50% of PRE4CLE's initial two-year goal of 2,000 additional high-quality seats.

ENROLLMENT IN HIGH-QUALITY PRESCHOOL INCREASED BY 10%

A greater first-year gain than other nationally-recognized programs in cities across the U.S. (San Antonio, 6%; Boston, 9%)

EXPANDED THE NUMBER OF HIGH-QUALITY PROGRAMS

As of June of 2015, 15 preschool programs, serving 752 children, were rated as high-quality in Ohio's Step Up to Quality Rating system; six of those sites were the first Cleveland Metropolitan School District sites to be rated, and all six achieved the highest rating of 5-stars.

PRE4CLE IS FOCUSED ON OUTREACH TO FAMILIES

We are partnering with more than 50 community organizations in a research-based recruitment and communication campaign to elevate awareness and increase demand for high-quality preschool.

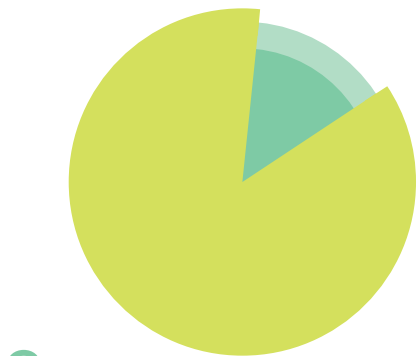
\*Bracken Assessment data provided by Case Western Reserve University. PRE4CLE uses the Bracken School Readiness Assessment, a standardized measure of kindergarten readiness, during a child's last year of preschool to measure eighty-five foundational and educationally relevant academic concepts in five categories.



Preparing Cleveland's Children for School Success

80% OF CHILDREN IN PRE4CLE CLASSROOMS ARE ON TRACK FOR KINDERGARTEN READINESS

At the end of the 2014-2015 preschool year, 80% of children in high-quality PRE4CLE classrooms who received a Bracken Kindergarten Readiness Assessment\* scored in the top three categories of kindergarten readiness, significantly increasing their likelihood of entering kindergarten fully prepared.



80%

of children in PRE4CLE classrooms on track for kindergarten readiness based on the Bracken Assessment

Building Collaboration & Awareness

THE CLEVELAND EARLY CHILDHOOD COMPACT IS A GROUNDBREAKING COLLABORATION

The Cleveland Early Childhood Compact, a public-private partnership leading PRE4CLE, is bringing unprecedented collaboration to preschool expansion. PRE4CLE was praised as a national model for community collaboration supporting preschool expansion during a White House Forum in December 2014.

SUPPORTED BY THE CLEVELAND COMMUNITY

PRE4CLE raised more than \$9 million to support its first three years of operation from foundations, the Cleveland Metropolitan School District, and Cuyahoga County.

PRE4CLE IS PARTNERING WITH THE BEST

PRE4CLE partnered with 90 high-quality early learning providers as "Early Adopters" of PRE4CLE, representing 99% of high-quality early learning providers in Cleveland.

99% are Early Adopters

OUR BENCHMARKS

PRE4CLE identified two child-level benchmarks and two system-level benchmarks to measure our success.

Child Level

BENCHMARK

Ensure that two-thirds of children in PRE4CLE arrive at kindergarten scoring above the county mean on the state's kindergarten readiness measure by 2018.

PROGRESS IN 2014-2015

Kindergarten readiness data from the State of Ohio are not available for the 2014-2015 school year.

BENCHMARK

At least half of the children in PRE4CLE programs show "meaningful improvement" during their last year of preschool by 2016.

PROGRESS IN 2014-2015

31% of children showed meaningful improvement (defined as significant improvement in three or more categories) on the Bracken School Readiness Assessment, and 57% of children showed improvement in two or more categories, putting PRE4CLE on a positive trajectory to meet the initial two-year goal of 50% of children showing meaningful improvement.



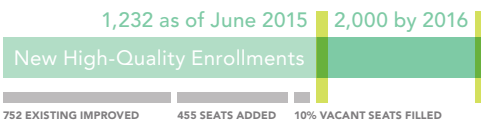
System Level

BENCHMARK

2,000 additional children enrolled in high-quality preschool by 2016.

PROGRESS IN 2014-2015

1,232 additional children were enrolled in high-quality preschool through: 752 existing seats became high-quality + 455 seats added + 10% vacant seats filled, meeting 62% of PRE4CLE's two-year goal of enrolling 2,000 additional children in high-quality preschool.



BENCHMARK

Target new high-quality seats in underserved neighborhoods, as well as throughout the city by 2016.

PROGRESS IN 2014-2015

Four new Classroom Start-Up Grants were awarded through PRE4CLE based on an analysis of the preschool needs of each neighborhood. This exceeded our goal of focusing on at least two neighborhoods in the first year of implementation.





AN IN-DEPTH LOOK:

# PROGRESS ON THE 10 COMPONENTS OF THE PRE4CLE PLAN

*Our work is rooted in ten core components that must be addressed in order to provide a systemic, city-wide and sustainable approach to ensuring every child has access to a high-quality preschool.*





*“Cleveland gets it. And I’m encouraged to see the work that is happening here to ensure that these young people get a good education.”*

The PRE4CLE partnership between the philanthropic, the corporate, and the public leadership here is the type of model that we want to highlight to really help expand the reach of high-quality preschool and move our communities forward.”

**Julian Castro**

United States Secretary of Housing and Urban Development

# 1

## ADMINISTRATION

### What we said:

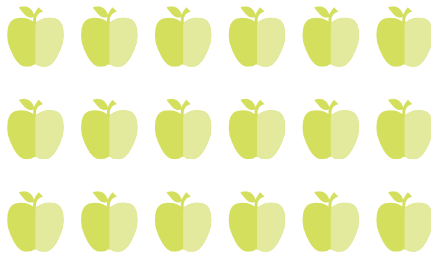
PRE4CLE will be guided in a transparent, accountable way by the Cleveland Early Childhood Compact, which will:

- Make recommendations for preschool expansion priorities and timing.
- Oversee provider participation processes.
- Select and oversee an administrative entity to manage the fiscal and program implementation.
- Oversee development of essential communications, outreach and advocacy activities.

### What we’ve done:

The Cleveland Early Childhood Compact was formed in the spring of 2014 to monitor and oversee the implementation of PRE4CLE. The Compact is currently chaired by Eric Gordon, CEO of CSMD and Marcia Egbert, Senior Program Officer for Human Services at The George Gund Foundation.

Membership includes a diverse public-private partnership consisting of education, early childhood development, civic, philanthropy, business, religious, labor, and community organizations.



# 90

high-quality preschool programs inducted as Early Adopters

The Compact conducted an RFP process, and chose The Educational Service Center of Cuyahoga County and Starting Point as lead agencies to implement PRE4CLE.

In addition, PRE4CLE inducted 90 high-quality early learning programs as Early Adopters. The Early Adopters are partnering to expand high-quality early learning in Cleveland, and form PRE4CLE’s Provider Advisory Committee to inform PRE4CLE’s implementation.

1 APPLE = 3 EARLY LEARNING PROGRAMS







# 2

## FINANCING

### What we said:

PRE4CLE will work to secure the necessary additional public and private support needed to implement this plan. Maximizing use of existing sources as well as identifying the level of new resources needed is essential.

### What we've done:

PRE4CLE raised \$8.5 million in public funding and \$900,000 in private funding to support the first three years of PRE4CLE's operation. Public funding was committed through CMSD and Cuyahoga County. Private funding was granted through The Cleveland Foundation, The George Gund Foundation, and the PNC Foundation.

In addition, PRE4CLE actively advocated for increased public funding support at the local, state, and federal levels. Those efforts led to PRE4CLE being featured by the White House through a visit to Cleveland by Secretary of Housing and Urban Development Julian Castro as well as a spotlight presentation at the White House Forum on Early Education. Additionally, PRE4CLE worked with local, state, and federal policymakers to advance awareness of the need for high-quality preschool in Cleveland.

*The White House hailed PRE4CLE as a ground-breaking program*

\$8.5 million

Public Funding

\$900,000

Private Funding

*Funding to support the first three years of PRE4CLE*

# 3

## ENROLLMENT IN HIGH-QUALITY PRESCHOOL

### What we said:

PRE4CLE will focus on helping families identify high-quality preschool opportunities and filling all existing high-quality preschool seats as quickly as possible, through a network of family recruiters who will work with both providers and families to ensure awareness of and accessibility to open preschool seats.

### What we've done:

As part of its launch in summer 2014, PRE4CLE worked with community partners in marketing, community outreach, and media outreach to immediately raise awareness among parents about the importance of high-quality preschool.

Following that effort, PRE4CLE created a research-based recruitment plan and implementation strategy based on national best practices, in-depth conversations with Cleveland organizations serving families with young children, parent focus groups, and a 400-person parent poll.



*We launched a city-wide family engagement campaign*

*We launched a city-wide family engagement campaign*

As a result of this work, PRE4CLE launched a long-term communication and recruitment campaign in the spring of 2015. We also hired two Outreach and Engagement Specialists to lead a network of partner organizations to effectively reach out to families to explain why preschool matters and how to find the right high-quality preschool for their child.

*"I have seen so much growth in our daughter."*

When our daughter first started preschool she was able to recognize smaller words. After preschool, she began to read and write full sentences. Giving her high quality learning opportunities both at home and in the classroom has built the foundation she will need to succeed in school, and in life."

**Pierre Sain**

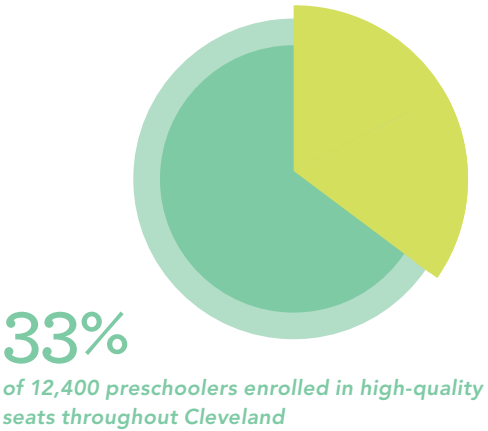
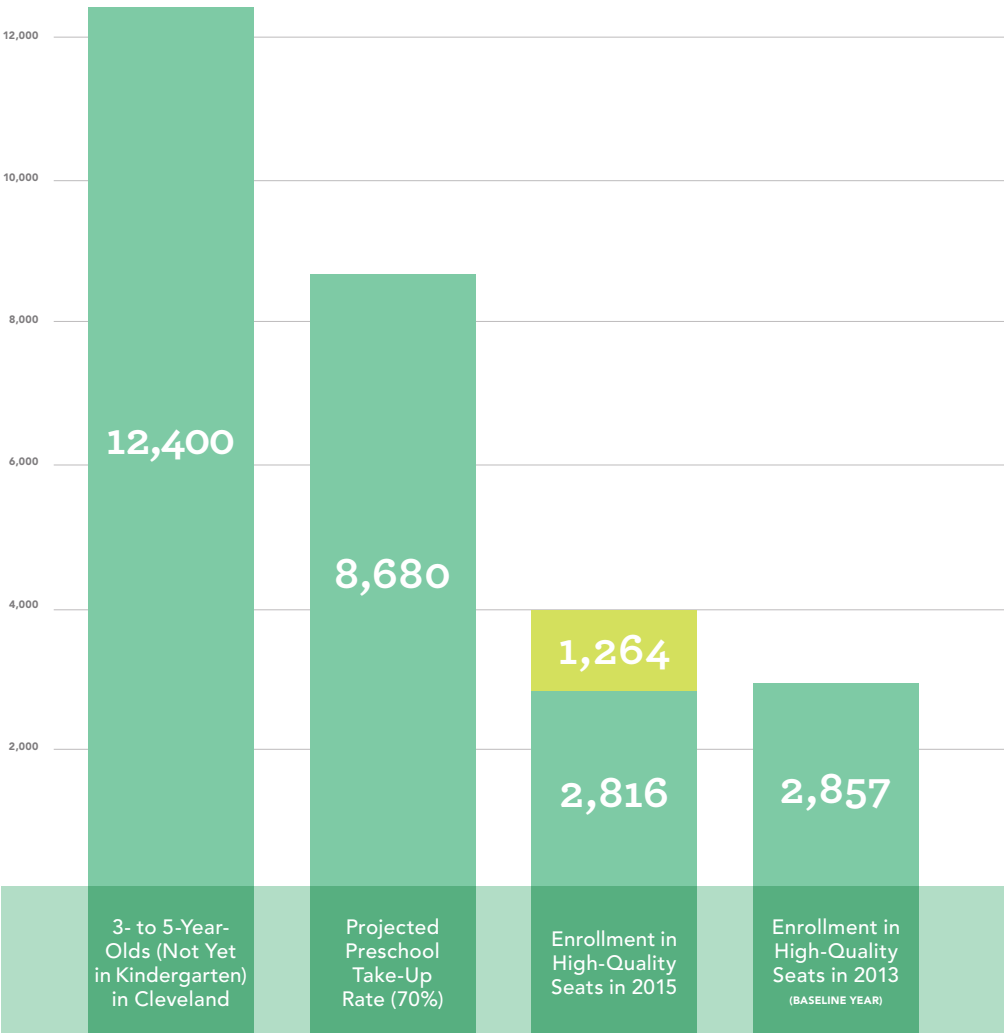
Father of preschool student at Tremont Montessori, a PRE4CLE Early Adopter



# STATE OF PRESCHOOL IN CLEVELAND DURING THE 2014-2015 SCHOOL YEAR

There are nearly 12,400 preschool aged children in Cleveland, but only 33% are enrolled in a high-quality preschool. PRE4CLE is working to close that gap, both by increasing the number of high-quality seats available and by connecting families with enrollment opportunities. The chart and map provide a snapshot of where need still exists and where high-quality programs are in place.

FIGURE 1: Preschool Capacity and Enrollment as of June 2015



Notes on the graph:

- High-quality includes the following: 1) 3+ star-rated sites (which can be private centers, public preschool classrooms, or Type B homes); and 2) Gold Seal homes. Gold Seal homes that were rated at 1- or 2-stars according to the SUTQ system are not considered high quality.
- In the PRE4CLE Plan, all public CMSD preschool seats were assumed to be high quality based on program standards. At that time (2013), CMSD programs did not have the ability to participate in Step Up To Quality due to Ohio's implementation schedule for rating programs licensed by the Ohio Department of Education. In 2014, CMSD programs were able to begin the rating process in the Step Up to Quality system, so data in the report reflect the number of CMSD preschool sites rated as high-quality vs. sites that are pending a rating from the State of Ohio. It is still assumed, based on program standards, that CMSD sites are high-quality, as reflected in the chart.
- In the PRE4CLE Plan, the total population for children ages 3-5 in Cleveland was listed as 16,353. This number included 5-year-olds already in kindergarten. To more accurately represent the population of preschool-aged children in need of preschool, PRE4CLE has adjusted the total population to reflect only preschool-aged children not in kindergarten.

CMSD SEATS PENDING A HIGH-QUALITY RATING



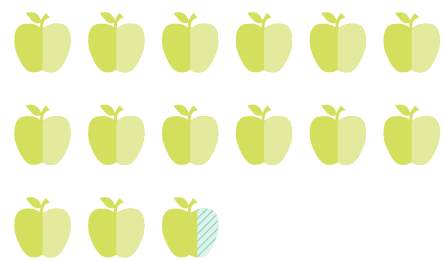


# 4

## RAPID AND EFFICIENT EXPANSION AND ACCESS

### What we said:

PRE4CLE will deploy a number of strategies to achieve the rapid and efficient expansion of high-quality preschool seats and ensure that families have access to those seats. Strategies range from expanding existing preschool classrooms in CMSD buildings, to identifying other sites with the capacity for expansion, to addressing transportation issues.



# 262

*new preschool students served through CMSD levy funds*



1 APPLE = 18 STUDENTS

### What we've done:

PRE4CLE partnered with Cuyahoga County and the State of Ohio to expand 92 half-day state-funded preschool seats to full-day in high-quality preschool sites.

*We leverage public and private partners to increase quality seats* CMSD expanded to serve 262 new preschool students through CMSD levy funds. This was accomplished by expanding existing classrooms from 14 to 20 students by adding a qualified teacher's aide, expanding integrated classrooms to serve typically-developing and special needs children, and adding classrooms in selected sites.

Additionally, more than half a dozen high-quality child care providers increased their capacity and enrolled an additional 101 children to meet demand.

PRE4CLE also helped to improve access to existing but vacant high-quality seats, filling roughly 10% of those available.



### *“PRE4CLE is a strong partner*

*in our work to ensure that our preschool classrooms are highly-quality, and provides resources to help our teachers in those classrooms. During the 2014-15 school year, the Cleveland Metropolitan School District received Ohio's top rating of 5-stars at six of our sites.”*

### **Nicole Vitale and Qianna Tidmore**

Curriculum and Instruction Managers, Office of Early Childhood Education, Cleveland Metropolitan School District





# 5

## IMPROVING QUALITY

**What we said:**

PRE4CLE will work with Cleveland providers to help increase the number of providers that have a state Step Up To Quality (SUTQ) 3-star rating or better, and help 3-star providers continually improve to 4- and 5-star ratings. This work will also focus on helping providers implement equitable compensation strategies for preschool teachers and staff, and advocacy to expand scholarship programs for teachers seeking an early childhood degree.



**What we've done:**

During the 2014-2015 school year, 15 preschool sites serving 752 preschool children moved to a Step Up to Quality (SUTQ) rating of 3- to 5-stars, including sites in CMSD, Head Start, and child care programs.

**15 preschool programs were rated as high-quality during 2014-2015.**

PRE4CLE used a blended approach that included the use of new and existing funding and staffing to increase the number of 3-, 4- and 5-star rated preschool programs in the Cleveland Metropolitan School District (CMSD) and community-based centers. In partnership with preschool programs and CMSD, resources were used to provide on-site technical assistance, training and peer-to-peer learning facilitation to staff in the preschool settings.

CMSD was awarded a 5-star rating for its first six rated preschool programs. CMSD (along with all other district-based preschools across the state) was granted access to SUTQ for the first time in the summer of 2014. PRE4CLE, through its administrative agency Starting Point, partnered with CMSD and the Ohio Department of Education to provide technical assistance and accelerated professional development for teacher's aides to help CMSD meet its first-year goal.

In child care and Head Start settings, nine programs moved to a 3- to 5-star rating. A blended funding method was used to help community-based child care and Head Start programs achieve, maintain and increase SUTQ 3-, 4- and 5-star ratings. Two strategies were developed, one for programs seeking to become rated for the first time and another for existing 3-star rated programs to maintain and/or increase their star rating. Funding sources used included Ohio Department of Job and Family Services, Cuyahoga County's Invest in Children and the United Way of Greater Cleveland.



90 out of 91 high-quality programs in Cleveland are Early Adopters.

99%

# 6

## PARTICIPATING PROVIDER REQUIREMENTS

**What we said:**

PRE4CLE will require stringent standards for preschool providers who wish to participate in PRE4CLE. The baseline for participation is a SUTQ 3-star rating, including the use of evidence-based curricula and professional development requirements that are necessary to maintain and improve that minimum 3-star rating.

**What we've done:**

PRE4CLE established quality standards for PRE4CLE partner preschool programs, called "Early Adopters" in year one, that started with a threshold of being a 3- to 5-star rated provider in Ohio's Step Up To Quality program, and added additional requirements for teacher education and smaller class sizes. There were 90 Early Adopters in year one, representing 99% in Cleveland.

PRE4CLE partner programs also must have a Step Up To Quality approved, research-based curriculum and child assessments in place to support the individual learning and development needs of children.



# 7

## SUPPORTING SUCCESSFUL TRANSITION

### What we said:

PRE4CLE will engage Early Learning Leadership Teams at all CMSD primary schools that will coordinate with families, preschool teachers and kindergarten teachers to ensure a smooth transition to kindergarten. In addition, PRE4CLE will partner with local organizations to host Kindergarten Information Nights across the city.

### What we've done:

CMSD completed a district-wide preschool to third grade transition plan, implemented at the end of the 2014-2015 school year.

**CMSD created a district-wide kindergarten transition strategy** with cross-agency

teams to improve systems related to transferring student data from all settings to CMSD for kindergarten transition, strengthening kindergarten information sessions for students and parents.

Based on the transition planning in year one, we are assessing how to best meet the goal of forming Early Learning Leadership Teams.

# 8

## LEVERAGING COMMUNITY RESOURCES

### What we said:

PRE4CLE will develop a Community Asset Road Map, available via online and mobile applications, which will allow parents to find and engage with Cleveland's many providers of health, social and cultural resources that support all domains of child development.

### What we've done:

PRE4CLE is partnering with the 2,000 Days Pledge on the development of an early

**Partnering with Cuyahoga County and the 2,000 Days Pledge are connecting parents to early learning resources** in Cuyahoga County.

2,000 Days is a community-wide collaborative working to empower families by helping them understand the multitude of choices they face in childhood development at home, in education, and in healthcare.

PRE4CLE is also partnering with Invest in Children, Cuyahoga County's public-private early childhood initiative, on the creation of an early childhood mobile app that will help families identify health, social, and cultural resources for young children throughout the county, including high-quality preschool.

# 9

## COMMUNITY ENGAGEMENT

### What we said:

PRE4CLE will develop and implement a comprehensive strategic communications plan to motivate and share messages with parents, providers and partners as the PRE4CLE Plan unfolds and expands.

### What we've done:

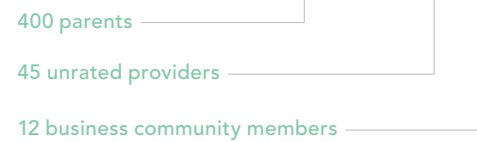
PRE4CLE launched a comprehensive strategic communication plan in the spring of 2015 that includes specific strategies to

**launched a strategic plan in 2015** inform families, providers, and the community about why quality preschool

is important to Cleveland, what makes for a high-quality preschool experience, and the importance of choosing a high-quality preschool program.

# 457

surveyed and interviewed



PRE4CLE conducted research that identified best practices and identified opportunities for and barriers to successful and strategic

**Nearly 500 people provided insights to shape our communication plan** communication approaches. Research conducted included:

- National scan of best practices in parent outreach and engagement from similar preschool expansion efforts.
- Survey of 400 Cleveland parents with young children.
- Survey of 45 of Cleveland's unrated, 1- and 2-star childcare providers.
- Interviews with 12 members of the Cleveland business community.
- A focus group of Cleveland parents.

In 2014-2015, PRE4CLE launched the first communication tools to families and providers, including resources to connect families to information about high-quality preschool and marketing for PRE4CLE providers to raise awareness of high-quality programs among Cleveland families.



*“To prepare children for the challenges ahead, we must work to connect*

the billions of dollars of catalytic capital investments currently underway to high-quality early education that will help set all of our children on a path to the jobs of the future. And further, indisputable research indicates that the return on investment in high-quality education and school readiness are significant and long-lasting. That's an investment that we at PNC and many of our corporate and foundation partners believe is a wise one.”

**Paul Clark**

Regional President  
PNC Bank



# 10

## EVALUATION

### What we said:

PRE4CLE will establish clear benchmarks and measure its ongoing success in terms of both the number of and enrollment in high-quality provider settings, and the social, emotional and academic growth of individual children in those settings.

### What we've done:

PRE4CLE partnered with Cuyahoga County's Universal Pre-Kindergarten Program (UPK) to implement the Bracken child-level evaluation for year one for a sample of children in high-quality sites, as well as implemented a system-level data structure to capture enrollment and capacity data.

To analyze the impact of high-quality preschool in Cleveland during year one of PRE4CLE, we used data from the Bracken School Readiness Assessment. The Bracken School Readiness Assessment is a standardized assessment designed specifically to measure a child's readiness for school by evaluating his/her understanding of eighty-five foundational and educationally relevant academic concepts in five categories.

The Bracken School Readiness Assessment was administered by independent consultants in preschool classrooms in the

fall of 2014 and spring of 2015. For this analysis, all of the sites are 3-, 4- or 5-star rated settings, located in Cleveland, and all are also part of Cuyahoga County's UPK program. In the fall, only children entering preschool for the first time were tested. In the spring, any children entering kindergarten in the coming fall were tested.

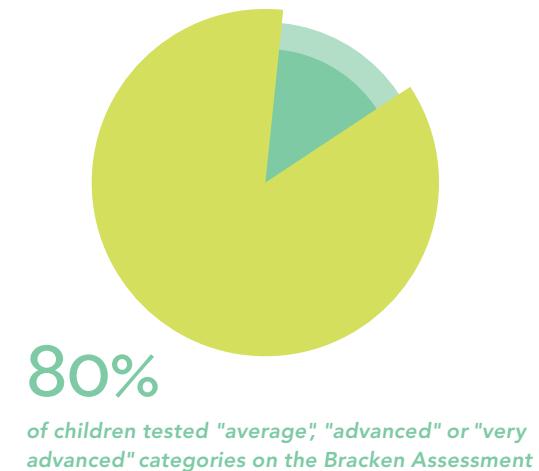
Overall, 31% of children showed meaningful improvement in 3 out of the 5 Bracken categories, with 57% showing progress on 2 categories. Additionally, 80% of children tested in the "average", "advanced", or "very

advanced" categories. Those in these three categories were

significantly more likely to enter kindergarten fully prepared. Children scoring in these categories have been shown to score significantly higher on Ohio's Kindergarten Readiness Assessment.

Additionally, PRE4CLE worked with Case Western Reserve University to examine the unique preschool and school readiness needs of each Cleveland neighborhood, which will be used as the basis of targeted preschool expansion. As a result of that study, PRE4CLE issued four Classroom Start-Up Grants through funding provided by

Cuyahoga County to high-quality providers to open four new classrooms in three neighborhoods identified as underserved: Glenville, Union-Miles, and Buckeye-Shaker Square. The grants provided funding to cover the start-up costs for four new, high-quality preschool classrooms.



*“Many of the families that we connected with during our first year of implementation didn’t realize that early learning opportunities were available*

to their children before kindergarten, or that there is affordable options for parents seeking high-quality preschool. Once they understand those options exist, Cleveland families were enthusiastic about finding the right preschool for their child, and grateful to PRE4CLE for helping to break down those barriers.”

### Britton Hill

Outreach and Engagement Specialist  
PRE4CLE





# OUR SUPPORT

*PRE4CLE would not be possible without the support of committed funders, compact members and staff.*

## PRE4CLE FUNDERS

Those on this list supplied financial support as well as their wisdom and experience to ensure that PRE4CLE got off to a successful start. Their investments in today's preschool children will result in a better Cleveland for all of us.

### The Cleveland Foundation

### The George Gund Foundation

### PNC Foundation

### Cleveland Metropolitan School District

### Cuyahoga County

## OUR STAFF

**Katie Kelly**  
Executive Director  
PRE4CLE

**Michelle Connavino**  
Operations and  
Outreach Specialist  
PRE4CLE

**Michelle Bledsoe**  
Coordinator  
PRE4CLE

**Akanni Thomas**  
Outreach and  
Engagement Specialist  
PRE4CLE

**Britton Hill**  
Outreach and  
Engagement Specialist  
PRE4CLE

**Billie Osborne-Fears**  
Executive Director  
Starting Point

## EXECUTIVE COMMITTEE

**Eric Gordon**  
CEO  
Cleveland Metropolitan School District

Co-Chair  
Cleveland Early Childhood Compact

**Marcia Egbert**  
Senior Program Officer for Human Services  
The George Gund Foundation

Co-Chair  
Cleveland Early Childhood Compact

**Rebekah Dorman**  
Director  
Cuyahoga County Office of Early Childhood  
Invest in Children

**Monyka Price**  
Chief of Education  
City of Cleveland, Office of Mayor Frank Jackson

**Mark Sniderman**  
Executive in Residence  
Case Western Reserve University

## CLEVELAND EARLY CHILDHOOD COMPACT 2014–2015

### MEMBERS

**Kristen Baird Adams**  
Senior VP and Managing Director  
PNC Bank  
Cleveland Regional Office

**Elizabeth Anthony**  
Senior Research Associate  
Case Western Reserve University

**Dan Brown**  
Economic Opportunity Fellow  
Cleveland Neighborhood Progress

**Lisa Bottoms**  
Program Director for Human  
Services and Child and  
Youth Development  
The Cleveland Foundation

**Ann Bowdish**  
Greater Cleveland Congregations

**Evelyn Burnett**  
Vice President of  
Economic Opportunity  
Cleveland Neighborhood Progress

**Jennifer Dodd**  
Director of Operations  
and Development  
Educational Service Center  
of Cuyahoga County

**Cindy Fareed**  
Quality Enhancement Director  
Starting Point

**Rob Fischer**  
Co-Director  
Center on Urban Poverty and  
Community Development  
Case Western Reserve University

**Magda Gomez**  
Cleveland Hispanic Roundtable

**Shadonna Griffin**  
Parent Representative  
CEOGC Head Start

**Trey Johnson**  
Fellow  
The George Gund Foundation

**Katie Kelly**  
Executive Director  
PRE4CLE

**Melissa Manos**  
Director  
Help Me Grow

**Bob Mengerink**  
Superintendent  
Educational Service Center of  
Cuyahoga County

**Ann Mullin**  
Senior Program Officer  
for Education  
The George Gund Foundation

**Elizabeth Newman**  
CEO  
The Centers for Families  
and Children

**Megan O'Bryan**  
Executive Director  
Cleveland Transformation Alliance

**Billie Osborne Fears**  
Executive Director  
Starting Point

**Judy Peters**  
Community Volunteer

**Michelle Pierre-Farid**  
Chief Academic Officer  
CMSD

**David Quolke**  
President  
Cleveland Teacher's Union

**Michelle Rzcudlo-Rupright**  
Teacher and CTU Secretary  
CMSD  
Cleveland Teacher's Union

**Linda Schlein**  
Greater Cleveland Congregations

**Felton Thomas**  
Director  
Cleveland Public Library

**Qianna Tidmore**  
Curriculum and Instruction  
Manager, Office of Early  
Childhood Education  
CMSD

**Tiana Tufts**  
Parent Representative  
CEOGC

**Nicole Vitale**  
Curriculum and Instruction  
Manager, Office of Early  
Childhood Education  
CMSD

**Susan Wagner**  
Content Expert  
CMSD

**Linda Williams**  
Senior Director of  
Educational Services  
PBS Ideastream

**Marianne Wolf**  
Manager of Special Education  
Preschool Department  
CMSD

**Khalilah Worley**  
Organizer  
Greater Cleveland Congregations



# OUR EARLY ADOPTERS 2014–2015

## Bellaire-Puritas

Artemus Ward Elementary School  
Robinson G. Jones Elementary School

## Broadway-Slavic Village

Mound Elementary School  
Warner Girls Leadership Academy  
Willow Elementary School

## Brooklyn Centre

Archwood Head Start

## Buckeye-Shaker Square

Debra Ann November Early Learning Center  
Fundamentals Early Childhood Development Academy  
Sunbeam Elementary School

## Buckeye-Woodhill

Buckeye-Woodland Elementary School  
East End Individual Learning Center  
Harvey Rice Elementary School

## Central

Bingham Early Learning Center  
Catholic Charities Early Learning Center at the Quandran  
Cleveland School of the Arts- lower campus  
Family Life Child Care of Stepstone  
George Washington Carver Elementary School  
King Kennedy Head Start  
Marion Sterling Elementary School  
The Early Childhood Center at Arbor Park  
William Patrick Day Head Start  
YWCA Metro Early Learning Center

## Collinwood-Nottingham

East Clark Elementary School  
Hanna Gibbons-Nottingham Elementary School  
Kenneth W. Clement Boys Leadership Academy

## Cudell

Willard Head Start

## Detroit-Shoreway

Gordon Square Early Learning Center  
H. Barbara Booker Elementary School  
Joseph Gallagher Elementary School  
St. Augustine Manor Child Enrichment Center  
Waverly Elementary School

## Downtown

Cleveland Fed Kids Child Care

## Euclid-Green

Carl B. Stokes Head Start  
Euclid Park Elementary School

## Fairfax

Bolton Elementary School

## Glenville

Franklin D. Roosevelt Elementary School  
Iowa-Maple Elementary School  
Mary M. Bethune Elementary School  
Patrick Henry Elementary School  
Wade Early Learning Center

## Goodrich- Kirtland Park

Case Elementary School

## Hough

Daniel E. Morgan Elementary School  
Mary B. Martin Elementary School  
Wade Park Elementary School

## Jefferson

Garfield Elementary School  
McKinley Elementary School

## Kamm's

Clara E. Westropp Elementary School  
Douglas MacArthur Girls Leadership Academy  
Newton D. Baker Elementary School  
Riverside Elementary School  
Riverside Head Start  
West Park Discovery World  
Valley View Boy's Leadership Academy

## Kinsman

Anton Grdina Elementary School  
Holy Name Head Start  
Mather Early Learning Center

## Lee-Harvard

Adlai Stevenson Elementary School  
Charles W. Eliot Elementary School  
Louis Stokes Head Start

## Mount Pleasant

Andrew J. Rickoff Elementary School  
Murtis Taylor Child Enrichment Center

## North Shore Collinwood

Groveswood Head Start  
Memorial Elementary School  
Oliver Perry Elementary School

## Ohio City

Ohio City Early Learning Center  
Orchard Elementary School  
Paul Dunbar Elementary School

## Old Brooklyn

Benjamin Franklin Elementary School  
Charles A. Mooney Elementary School  
William C. Bryant Elementary School

## St. Clair-Superior

St. Phillip Head Start  
St. Thomas Aquinas Head Start  
Willson Elementary School

## Stockyards

Clark Elementary School  
Thomas Jefferson International Newcomers Academy

## Tremont

Buhrer Elementary School  
Luis Munoz Marin Elementary School  
Merrick House Settlement and Day Nursery  
Scranton Elementary School  
Tremont Montessori School

## Union-Miles

Chapelside Academy  
Miles Elementary School  
Nathan Hale Elementary School  
Paul Revere Elementary School  
Robert Jamison Elementary School

## University

Cleveland Music Settlement

## West Boulevard

Almira Elementary School  
Louis Agassiz Elementary School  
St. Ignatius Head Start  
Wilbur Wright Elementary School







